



# Order Catalog Switzerland





# INDEX

<b>HOW IT WORKS</b>	<b>4</b>
<b>THE HOOC SOLUTIONS</b>	<b>6</b>
<b>THE HOOC GATEWAYS</b>	<b>8</b>
HOOC CONNECT X	8
HOOC CONNECT XM	8
HOOC CONNECT XF	8
HOOC CONNECT XH	8
HOOC CONNECT XT	9
HOOC CONNECT M	9
HOOC CONNECT F	9
HOOC CONNECT H	9
HOOC CONNECT L	9
HOOC CONNECT E	9
HOOC CONNECT V	9
<b>THE LINE</b>	<b>10</b>
S Line	10
M Line	12
L Line	14
KNX Line	16
IoT Line	18
FW Line	20
<b>SPECIAL CASES</b>	<b>22</b>
HOOC LoRa	22
HOOC CrossLink	23
HOOC Alert	23
Upgrades	23





## Order Catalog Switzerland

# HOW DOES IT WORK?



### GATEWAY

Physical device or embedded solution

*necessary, but free choice (one-time purchase)*

+



### PACKAGES

S, M, L, KNX, IoT or FW

*necessary, but free choice (one-time purchase)*

+



### LICENCE

Business or Premium license

*optional, free choice (annual fees)*

## 1 SOLUTION

Select one of our solutions (HOOC Access, Alert, etc.). More on page 6

## 2 GATEWAY

Find the perfect gateway for you (H, F, etc.). More on page 8

## 3 SERVICES

Decide which services you need (Reporting, Notification Center, etc.). More on page 10

## 4 PACKAGE

Then choose your package (S, M, L, etc.). More on page 10

## 5 FUNCTIONALITIES

Find out if you need some additional functionalities (e.g. more alarm rules or longer data storage). More on page 10

## 6 LICENSES

If necessary, you can optionally choose a Business or Premium license at an annual fee. More on page 10

## 7 ORDER

Based on your final choice, we will be happy to send you an individual offer including prices and order numbers.

## 8 COSTS

Please note the following:

- a) Gateways one-time costs
- b) Packages one-time costs
- c) Business and Premium license annual fee

*All prices are exclusive of VAT. Subject to change and errors.*

Modular and scalable

# THE HOOC SOLUTIONS

**HOOC solutions are not only build according to the highest IT security standards and guarantee perfect user friendliness, but at the same time they are modular and scalable.**



## ACCESS

A highly performing VPN connection, which comes with a Secure Proxy web service and Smart User Management.



## ALERT

A new alarming tool that alerts in case of system failures and thereby saves you time, money and hassle.



## CUSTOMIZE

High-quality tailor-made solutions.



## DATACOLLECT

A two-in-one package for optimal data visualization and intelligent reporting.



## CONTROL

Best remote control for building services, technical facilities or smart homes.



## CROSSLINK

Efficient site-to-site VPN and innovative system networking combined in one solution.



## EMBEDDED

Our software technology; integrated into your hardware.



## LORA

A special LoRaWAN solution with the possibility to send small size data packages over long distances.



The entrance to your digital future.

# THE HOOC GATEWAYS

**Our HOOC gateways are the link between the HOOC Cloud and your installations and enable you to control them from a distance. Every gateway is preconfigured and ready to use upon delivery.**



## HOOC CONNECT XT

If you need a gateway for specific applications with an existing Internet connection, we recommend our Connect XT.



## HOOC CONNECT M

The Connect M is the ideal gateway for temporary use during commissioning or for the mobile radio connection of sites without Internet access.



## HOOC CONNECT X

The Connect X is a typical allrounder. By offering LTE/Mobile, LoRaWAN, WAN/LAN/WLAN, RS485 and I/O's, it combines all new functionalities in one single device.



## HOOC CONNECT XM

You are looking for a gateway for mobile remote access of PLC and industrial plants? The Connect XM offers you what you need (LTE, WAN/LAN/WLAN, RS485 and 4 I/O's).



## HOOC CONNECT H

The DIN rail model is particularly suitable for installation in control cabinets, enclosures and overall for all HVAC applications in building services.



## HOOC CONNECT L

The Connect L always comes into play when uncomplicated remote maintenance of network infrastructures is required.



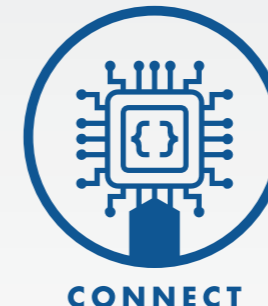
## HOOC CONNECT XF

Just the thing for energy-efficient transmission of sensor data over long distances and uncomplicated retrofitting of older systems.



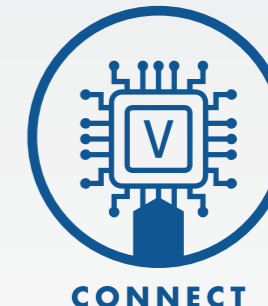
## HOOC CONNECT XH

Without LTE and LoRaWAN, but with a set of WAN/LAN/WLAN, RS485 and I/O connections, our Connect XH is perfect for your DIN rail, home and HVAC.



## HOOC CONNECT E

Our embedded gateway or HOOC Connect E is a special software that can be integrated into your company's existing hardware.



## HOOC CONNECT V

Thanks to our virtual gateway, users can be blocked or enabled for a limited time period or for specific functions and systems.

SOLUTIONS   SERVICES   FUNCTIONALITIES		S-PACKAGE	S-BUSINESS	S-PREMIUM
ACCESS	Remote Access	Simultaneous connections / accesses	1	1
		Bandwidth UP download (Mbit/sec)	1	1
		Data volume	fair use	fair use
		Duration of client and gateway connection logs	3 months	3 months
		Virtual DHCP server & security features	-	-
		Forwarding management	-	-
		Two-factor authentication	✓	✓
	Secure Proxy	Use of the service	✓	✓
		Data volume	fair use	fair use
		Number of links / mappings	1	1
		Use of http/s protocol	✓	✓
		Use of SSH and VNC protocol	-	✓
		Company branding for login page	-	✓
		Number of permalinks	-	1
ALERT	Alarming	Use of the service	-	✓
		Connection monitoring	-	✓
		Monitoring of KNX and Modbus TCP /IP data points	-	✓
		Storage of the alarm notifications in the event log	-	1 month
		Number of alarm rules	-	2
	Notification Center	Use of the service	✓	✓
		Number of parametrizable rules	5	5
		Number of individual alarm texts	-	20
		Number of calendars	-	-
		Number of recipient groups	5	10
		Number of recipients – individual users (SMS/voice)	-	5*
		Number of recipients – chat (HOOC Collab)	1	1
		Number of recipients – HOOC users (SMS/voice/mail/push notifi.)	-	1*
		Number of recipients – third party (e-mail)	5	5
CONTROL	Secure Remote Control	Use of the service	-	✓
		Number of protocols / end devices	-	1
		Number of data points	-	1
		KNX monitoring (bus load & group monitor)	-	✓
		LoRa monitoring (packet monitor)	-	✓
		Storage of data points in log	-	1 month
		Log storage packet monitor	-	3 months
		Number of REST queries per month	-	-
		Visualization and operation via app	-	✓
		Persistent memory in Modbus/TCP server	-	✓
		Number of data point mappings	-	-
DATA-COLLECT	Report	Use of the service	-	✓
		Creation of automatic reports	-	✓
		Number of created and archived reports	-	1

# S LINE

The S Line is our starter model. It includes the basic functionalities of VPN remote access, remote programming as well as Secure Proxy.

	S-PACKAGE (one-time purchase)	S-BUSINESS (annual fees)	S-PREMIUM (annual fees)
GATEWAY	ORDERING NUMBER	ORDERING NUMBER	ORDERING NUMBER
Connect X	522139	748400	748500
Connect XM	522136	748400	748500
Connect XF	522133	748400	748500
Connect XH	522132	748400	748500
Connect XT	522134	748400	748500
Connect M	522236	748400	748500
Connect H	522232	748400	748500
Connect L	522238	748400	748500
Connect E	522230	748400	748500
Connect V	522231	748400	748500

LICENSE EXTENSIONS* (annual fees)	ORDERING NUMBER
Additional HOOC Collab user	748230
Additional user (notification center)	748240
Additional calendar (notification center)	748242
Additional alarm rules (notification center)	748244

CREDITS** (1 SMS = 30 credits   1 call = 60 credits)	ORDERING NUMBER
Package of 6000 Credits	748800
Package of 25'000 Credits	748804
Package of 50'000 Credits	748806

SOLUTIONS   SERVICES   FUNCTIONALITIES		M-PACKAGE	M-BUSINESS	M-PREMIUM	
ACCESS	Remote Access	Simultaneous connections / accesses	3	3	
		Bandwidth UP download (Mbit/sec)	5	5	
		Data volume	fair use	fair use	fair use
		Duration of client and gateway connection logs	3 months	3 months	3 months
		Virtual DHCP server & security features	✓	✓	✓
		Forwarding management	✓	✓	✓
		Two-factor authentication	✓	✓	✓
	Secure Proxy	Use of the service	✓	✓	✓
		Data volume	fair use	fair use	fair use
		Number of links / mappings	2	5	20
		Use of http/s protocol	✓	✓	✓
		Use of SSH and VNC protocol	✓	✓	✓
		Company branding for login page	✓	✓	✓
		Number of permalinks	2	5	20
ALERT	Alarming	Use of the service	✓	✓	
		Connection monitoring	✓	✓	
		Monitoring of KNX and Modbus TCP /IP data points	-	✓	✓
		Storage of the alarm notifications in the event log	1 day	1 month	12 months
		Number of alarm rules	1	10	20
	Notification Center	Use of the service	✓	✓	✓
		Number of parametrizable rules	5	10	20
		Number of individual alarm texts	-	20	100
		Number of calendars	-	-	1*
		Number of recipient groups	5	10	20
		Number of recipients – individual users (SMS/voice)	-	5*	5*
		Number of recipients – chat (HOOC Collab)	1	2	5
		Number of recipients – HOOC users (SMS/voice/mail/push notifi.)	-	1*	1*
		Number of recipients – third party (e-mail)	5	5	5
CONTROL	Secure Remote Control	Use of the service	✓	✓	
		Number of protocols / end devices	2	2*	2*
		Number of data points	100	100	100
		KNX monitoring (bus load & group monitor)	✓	✓	✓
		LoRa monitoring (packet monitor)	✓	✓	✓
		Storage of data points in log	1 day	1 month	12 months
		Log storage packet monitor	1 month	3 months	6 months
		Number of REST queries per month	-	-	100 k
		Visualization and operation via app	✓	✓	✓
		Persistent memory in Modbus/TCP server	-	✓	✓
DATA-COLLECT	Report	Number of data point mappings	-	20	50
		Use of the service	-	-	✓
		Creation of automatic reports	-	-	✓
		Number of created and archived reports	-	-	5

# M LINE

The M Line contains extended functionalities for VPN (multiple simultaneous accesses, higher bandwidth, security features) as well as data visualization and remote alarming.

	M-PACKAGE (one-time purchase)	M-BUSINESS (annual fees)	M-PREMIUM (annual fees)
GATEWAY	ORDERING NUMBER	ORDERING NUMBER	ORDERING NUMBER
Connect X	522149	748400	748500
Connect XM	522146	748400	748500
Connect XF	522143	748400	748500
Connect XH	522142	748400	748500
Connect XT	522144	748400	748500
Connect M	522246	748400	748500
Connect H	522242	748400	748500
Connect L	522248	748400	748500
Connect E	522240	748400	748500
Connect V	522241	748400	748500

LICENSE EXTENSIONS* (annual fees)	ORDERING NUMBER
Additional HOOC Collab user	748230
Additional user (notification center)	748240
Additional calendar (notification center)	748242
Additional alarm rules (notification center)	748244
Zusätzliche Endgeräte Secure Remote Control	748250

CREDITS** (1 SMS = 30 credits   1 call = 60 credits)	ORDERING NUMBER
Package of 6000 Credits	748800
Package of 25'000 Credits	748804
Package of 50'000 Credits	748806

SOLUTIONS   SERVICES   FUNCTIONALITIES		L-PACKAGE	L-BUSINESS	L-PREMIUM	
ACCESS	Remote Access	Simultaneous connections / accesses	10	10	
		Bandwidth UP download (Mbit/sec)	10	10	
		Data volume	fair use	fair use	fair use
		Duration of client and gateway connection logs	3 months	3 months	3 months
		Virtual DHCP server & security features	✓	✓	✓
		Forwarding management	✓	✓	✓
		Two-factor authentication	✓	✓	✓
	Secure Proxy	Use of the service	✓	✓	✓
		Data volume	fair use	fair use	fair use
		Number of links / mappings	5	10	50
		Use of http/s protocol	✓	✓	✓
		Use of SSH and VNC protocol	✓	✓	✓
		Company branding for login page	✓	✓	✓
		Number of permalinks	5	10	50
ALERT	Alarming	Use of the service	✓	✓	
		Connection monitoring	✓	✓	
		Monitoring of KNX and Modbus TCP /IP data points	-	✓	✓
		Storage of the alarm notifications in the event log	1 day	1 month	24 months
		Number of alarm rules	1	20	50
	Notification Center	Use of the service	✓	✓	✓
		Number of parametrizable rules	5	20	50
		Number of individual alarm texts	-	20	100
		Number of calendars	-	-	1*
		Number of recipient groups	5	10	20
		Number of recipients – individual users (SMS/voice)	-	5*	5*
		Number of recipients – chat (HOOC Collab)	1	5	10
		Number of recipients – HOOC users (SMS/voice/mail/push notifi.)	-	1*	1*
		Number of recipients – third party (e-mail)	5	5	5
CONTROL	Secure Remote Control	Use of the service	✓	✓	
		Number of protocols / end devices	5	5*	5*
		Number of data points	500	500	500
		KNX monitoring (bus load & group monitor)	✓	✓	✓
		LoRa monitoring (packet monitor)	✓	✓	✓
		Storage of data points in log	1 day	1 month	24 months
		Log storage packet monitor	1 month	3 months	6 months
		Number of REST queries per month	-	-	1000 k
		Visualization and operation via app	✓	✓	✓
		Persistent memory in Modbus/TCP server	-	✓	✓
		Number of data point mappings	-	20	50
DATA-COLLECT	Report	Use of the service	-	✓	
		Creation of automatic reports	-	✓	
		Number of created and archived reports	-	10	

# L LINE

The L Line is our top shot series, with a focus on long-term data storage (up to 24 months) and many extra functionalities such as reporting, calendar functions, etc.

	L-PACKAGE (one-time purchase)	L-BUSINESS (annual fees)	L-PREMIUM (annual fees)
GATEWAY	ORDERING NUMBER	ORDERING NUMBER	ORDERING NUMBER
Connect X	522159	748400	748500
Connect XM	522156	748400	748500
Connect XF	522153	748400	748500
Connect XH	522152	748400	748500
Connect XT	522154	748400	748500
Connect M	522256	748400	748500
Connect H	522252	748400	748500
Connect L	522258	748400	748500
Connect E	522250	748400	748500
Connect V	522251	748400	748500

LICENSE EXTENSIONS* (annual fees)	ORDERING NUMBER
Additional HOOC Collab user	748230
Additional user (notification center)	748240
Additional calendar (notification center)	748242
Additional alarm rules (notification center)	748244
Zusätzliche Endgeräte Secure Remote Control	748250

CREDITS** (1 SMS = 30 credits   1 call = 60 credits)	ORDERING NUMBER
Package of 6000 Credits	748800
Package of 25'000 Credits	748804
Package of 50'000 Credits	748806



SOLUTIONS   SERVICES   FUNCTIONALITIES		KNX-PACKAGE	KNX-BUSINESS	KNX-PREMIUM	
ACCESS	Remote Access	Simultaneous connections / accesses	1	1	
		Bandwidth UP download (Mbit/sec)	1	1	
		Data volume	fair use	fair use	
		Duration of client and gateway connection logs	3 months	3 months	
		Virtual DHCP server & security features	-	-	
		Forwarding management	-	-	
	Secure Proxy	Two-factor authentication	✓	✓	
		Use of the service	-	-	
		Data volume	-	-	
		Number of links / mappings	-	-	
		Use of http/s protocol	-	-	
		Use of SSH and VNC protocol	-	-	
		Company branding for login page	-	-	
		Number of permalinks	-	-	
ALERT	Alarming	Use of the service	-	✓	
		Connection monitoring	-	✓	
		Monitoring of KNX and Modbus TCP /IP data points	-	✓	
		Storage of the alarm notifications in the event log	-	1 month	12 months
		Number of alarm rules	-	10	20
	Notification Center	Use of the service	✓	✓	
		Number of parametrizable rules	5	10	20
		Number of individual alarm texts	-	20	100
		Number of calendars	-	-	1*
		Number of recipient groups	5	10	20
		Number of recipients – individual users (SMS/voice)	-	5*	5*
		Number of recipients – chat (HOOC Collab)	1	2	5
		Number of recipients – HOOC users (SMS/voice/mail/push notifi.)	-	1*	1*
		Number of recipients – third party (e-mail)	5	5	5
CONTROL	Secure Remote Control	Use of the service	✓	✓	
		Number of protocols / end devices	1	1*	1*
		Number of data points	100	100	100
		KNX monitoring (bus load & group monitor)	✓	✓	✓
		LoRa monitoring (packet monitor)	✓	✓	✓
		Storage of data points in log	1 day	1 month	12 months
		Log storage packet monitor	1 month	3 months	6 months
		Number of REST queries per month	-	-	-
		Visualization and operation via app	✓	✓	✓
		Persistent memory in Modbus/TCP server	-	✓	✓
DATA-COLLECT	Report	Number of data point mappings	-	-	
		Use of the service	-	✓	
		Creation of automatic reports	-	✓	
		Number of created and archived reports	-	5	

# KNX LINE

**This series is the classic for system integrators in the field of KNX. It includes remote programming and smart alarm as well as special features like bus load and KNX group monitor.**

GATEWAY	KNX-PACKAGE (one-time purchase)	KNX-BUSINESS (annual fees)	KNX-PREMIUM (annual fees)
	ORDERING NUMBER	ORDERING NUMBER	ORDERING NUMBER
Connect X	522169	748400	748500
Connect XM	522166	748400	748500
Connect XF	522163	748400	748500
Connect XH	522162	748400	748500
Connect XT	522164	748400	748500
Connect M	522266	748400	748500
Connect H	522262	748400	748500
Connect L	522268	748400	748500
Connect E	522260	748400	748500
Connect V	522261	748400	748500

LICENSE EXTENSIONS* (annual fees)	ORDERING NUMBER
Additional HOOC Collab user	748230
Additional user (notification center)	748240
Additional calendar (notification center)	748242
Additional alarm rules (notification center)	748244
Zusätzliche Endgeräte Secure Remote Control	748250

CREDITS** (1 SMS = 30 credits   1 call = 60 credits)	ORDERING NUMBER
Package of 6000 Credits	748800
Package of 25'000 Credits	748804
Package of 50'000 Credits	748806

SOLUTIONS   SERVICES   FUNCTIONALITIES		IOT-PACKAGE	IOT-BUSINESS	IOT-PREMIUM	
ACCESS	Remote Access	Simultaneous connections / accesses	-	-	
		Bandwidth UP download (Mbit/sec)	-	-	
		Data volume	-	-	
		Duration of client and gateway connection logs	-	-	
		Virtual DHCP server & security features	-	-	
		Forwarding management	-	-	
		Two-factor authentication	-	-	
	Secure Proxy	Use of the service	-	-	
		Data volume	-	-	
		Number of links / mappings	-	-	
		Use of http/s protocol	-	-	
		Use of SSH and VNC protocol	-	-	
		Company branding for login page	-	-	
		Number of permalinks	-	-	
ALERT	Alarming	Use of the service	-	✓	
		Connection monitoring	-	✓	
		Monitoring of KNX and Modbus TCP /IP data points	-	✓	
		Storage of the alarm notifications in the event log	-	1 month	12 months
		Number of alarm rules	-	10	20
	Notification Center	Use of the service	✓	✓	✓
		Number of parametrizable rules	5	10	20
		Number of individual alarm texts	-	20	100
		Number of calendars	-	-	1*
		Number of recipient groups	5	10	20
		Number of recipients – individual users (SMS/voice)	-	5*	5*
		Number of recipients – chat (HOOC Collab)	1	2	5
		Number of recipients – HOOC users (SMS/voice/mail/push notifi.)	-	1*	1*
		Number of recipients – third party (e-mail)	5	5	5
CONTROL	Secure Remote Control	Use of the service	✓	✓	
		Number of protocols / end devices	10	10*	10*
		Number of data points	100	100	100
		KNX monitoring (bus load & group monitor)	✓	✓	✓
		LoRa monitoring (packet monitor)	✓	✓	✓
		Storage of data points in log	1 month	1 month	12 months
		Log storage packet monitor	1 month	3 months	6 months
		Number of REST queries per month	-	-	100 k
		Visualization and operation via app	✓	✓	✓
		Persistent memory in Modbus/TCP server	-	✓	✓
DATA-COLLECT	Report	Number of data point mappings	-	20	50
		Use of the service	-	-	✓
		Creation of automatic reports	-	-	✓
		Number of created and archived reports	-	-	5

# IOT LINE

The IoT Line covers data visualization, monitoring, reporting and alerting, but does not include remote VPN access and Secure Proxy.

GATEWAY	IOT-PACKAGE (one-time purchase)	IOT-BUSINESS (annual fees)	IOT-PREMIUM (annual fees)
	ORDERING NUMBER	ORDERING NUMBER	ORDERING NUMBER
Connect X	522179	748400	748500
Connect XM	522176	748400	748500
Connect XF	522173	748400	748500
Connect XH	522172	748400	748500
Connect XT	522174	748400	748500
Connect M	522276	748400	748500
Connect H	522272	748400	748500
Connect L	522278	748400	748500
Connect E	522270	748400	748500
Connect V	522271	748400	748500

LICENSE EXTENSIONS* (annual fees)	ORDERING NUMBER
Additional HOOC Collab user	748230
Additional user (notification center)	748240
Additional calendar (notification center)	748242
Additional alarm rules (notification center)	748244
Zusätzliche Endgeräte Secure Remote Control	748250

CREDITS** (1 SMS = 30 credits   1 call = 60 credits)	ORDERING NUMBER
Package of 6000 Credits	748800
Package of 25'000 Credits	748804
Package of 50'000 Credits	748806



SOLUTIONS   SERVICES   FUNCTIONALITIES		FW-PACKAGE	
ACCESS	Remote Access	Simultaneous connections / accesses	1
		Bandwidth UP download (Mbit/sec)	5
		Data volume	fair use
		Duration of client and gateway connection logs	3 months
		Virtual DHCP server & security features	✓
		Forwarding management	-
	Secure Proxy	Two-factor authentication	✓
		Use of the service	-
		Data volume	-
		Number of links / mappings	-
		Use of http/s protocol	-
		Use of SSH and VNC protocol	-
		Company branding for login page	-
		Number of permalinks	-
ALERT	Alarming	Use of the service	-
		Connection monitoring	-
		Monitoring of KNX and Modbus TCP /IP data points	-
		Storage of the alarm notifications in the event log	-
		Number of alarm rules	-
	Notification Center	Use of the service	-
		Number of parametrizable rules	-
		Number of individual alarm texts	-
		Number of calendars	-
		Number of recipient groups	-
		Number of recipients – individual users (SMS/voice)	-
		Number of recipients – chat (HOOC Collab)	-
		Number of recipients – HOOC users (SMS/voice/mail/push notifi.)	-
		Number of recipients – third party (e-mail)	-
CONTROL	Secure Remote Control	Use of the service	-
		Number of protocols / end devices	-
		Number of data points	-
		KNX monitoring (bus load & group monitor)	-
		LoRa monitoring (packet monitor)	-
		Storage of data points in log	-
		Log storage packet monitor	-
		Number of REST queries per month	-
		Visualization and operation via app	-
		Persistent memory in Modbus/TCP server	-
		Number of data point mappings	-
DATA-COLLECT	Report	Use of the service	-
		Creation of automatic reports	-
		Number of created and archived reports	-

# FW LINE

**Our special series for virtual plants that can directly be connected with physical plants. One of the FWs special feature allows the blocking or opening of access for dedicated end devices.**

FW-PACKAGE (one-time purchase)	ORDERING NUMBER
Connect V	522281

LICENSE EXTENSIONS* (annual fees)	ORDERING NUMBER
Additional HOOC Collab user	748230
Additional user (notification center)	748240
Additional calendar (notification center)	748242
Additional alarm rules (notification center)	748244
Zusätzliche Endgeräte Secure Remote Control	748250

CREDITS** (1 SMS = 30 credits   1 call = 60 credits)	ORDERING NUMBER
Package of 6000 Credits	748800
Package of 25'000 Credits	748804
Package of 50'000 Credits	748806

# HOOC LORA

Our HOOC LoRa works on the same principle as all our solutions (gateway + package + licenses / see page 4) The only thing that changes is the fact that in addition to the gateway (Connect XF), actuators and sensors are needed.



**SENSOR ERS-LIGHT**

**ORDERING NUMBER**

522600



**SENSOR ERS**

**ORDERING NUMBER**

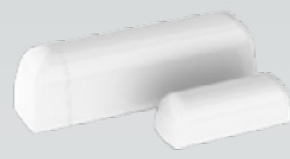
522601



**SENSOR ERS-CO<sup>2</sup>**

**ORDERING NUMBER**

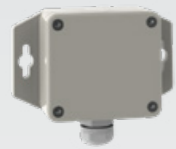
522602



**SENSOR EMS**

**ORDERING NUMBER**

522605



**SENSOR ELT2-I-ST**

**ORDERING NUMBER**

522610



**I/O LW13IO**

**ORDERING NUMBER**

522620



**I/O LW12MET**

**ORDERING NUMBER**

522621



**I/O LW06KIO**

**ORDERING NUMBER**

522622



**I/O LW13MIO**

**ORDERING NUMBER**

522623



**FELDTESER ARF8123AA**

**ORDERING NUMBER**

522630



**OMNI ANTENNA KIT**

**ORDERING NUMBER**

522410

More information: <https://hooc.ch/en-us/solutions/lora>

# HOOC CROSSLINK

Our HOOC CrossLink works on the same principle as all our solutions (gateway + package + licenses / more on page 4) – except that it requires an additional order number depending on the number of sites or systems.

	SITE-TO-SITE NETWORKING (annual fees)	SYSTEM NETWORKING (annual fees)
	ORDERING NUMBER	ORDERING NUMBER
1 site	748600	748660
up to 5 sites	748601	748661
up to 10 sites	748602	748662
more than 25 sites	on demand	on demand

# HOOC ALERT

In addition to the normal site notification center, HOOC offers an additional high-level alarm service (user notification center).

USER NOTIFICATION CENTER (annual fees)	UNIT	ORDERING NUMBER
Using the user notification center	per service	765300
Number of calendars	per calendar	765302
Number of users	per person	765304

# UPGRADES

All purchased packages can be upgraded.

	UPGRADE TO M-PACKAGE (one-time purchase)	UPGRADE TO L-PACKAGE (one-time purchase)
	ORDERING NUMBER	ORDERING NUMBER
S-Package	746204	746208
M-Package	–	746206
KNX-Package	746212	746214
IoT-Package	746216	746218



## MORE INFOS

**For end customers:** Contact one of our distributors  
<https://hooc.ch/en-us/about-us/partners>

**For distributors:** Register under  
<https://disti-en.promo.hooc.ch>

Please find our latest videos, security features and product developments on our social media channels    

## CONTACT US

### HOOC AG

Torweg 8 | 3930 Visp  
+41 27 948 46 00 | [info@hooc.ch](mailto:info@hooc.ch)

[www.hooc.ch](http://www.hooc.ch)